



**UFLEX LIMITED  
MOLDING DIVISION**

**PRODUCT SPECIFICATION**

Doc. No. : UFL/FR/QA/056

Rev. No. : 00

Rev. Date : 18-07-2020

**Product 8.5mm Cap & Spout Assembled**

**Material Cap: PPCP**

**Part Weight: 2.44± 0.20gm**

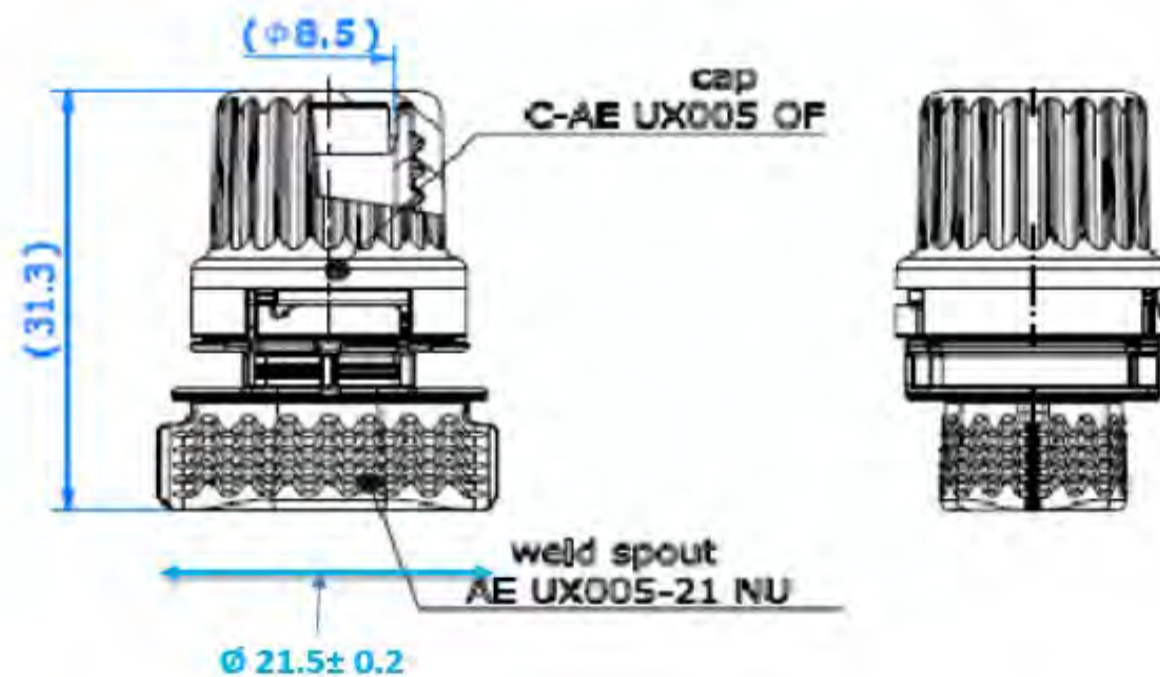
**Material Spout: HDPE**

**Product Code Cap & Spout Assembled : ASSC-8.5**

**Masterbatch %: As per Shade Requirement**

**Product Parameters**

S no.	Test Name	Parameter	Standard
1	Dimension Analysis	Total Height with Cap	31.30±0.50mm
		Spout Width	Ø12.00+0/-0.60mm
2	Tamper Evident Test	Tamper ring should Break	-
3	Leakage Test	Inspection Pressure: 0.25bar Inspection Pressure Tolerance: 0.05bar Filling time: 3 sec Stabilization Time: 3 sec Test time: 3 sec	Pressure Decay upto 70pa allowed
4	Packing	-	7000pcs per Box





'A Part of your daily life'

# UFLEX LIMITED MOLDING DIVISION

## PRODUCT SPECIFICATION

Doc. No. : UFL/FR/QA/057

Rev. No. : 00

Rev. Date : 18-07-2020

Product : 8.5mm Cap & Spout

Material Cap: PPCP

Part Weight Cap: 1.07± 0.10gm

Material Spout: HDPE

Part Weight Spout: 1.37± 0.10gm

Masterbatch %: As per Shade Requirement

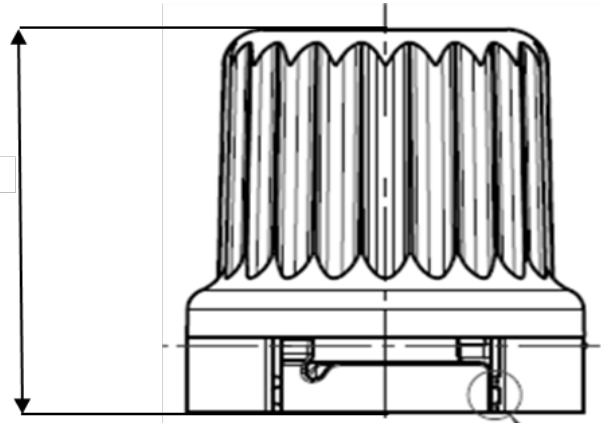
Product Code Cap: CAPP-8.5

Product Code Spout : SPO-8.5

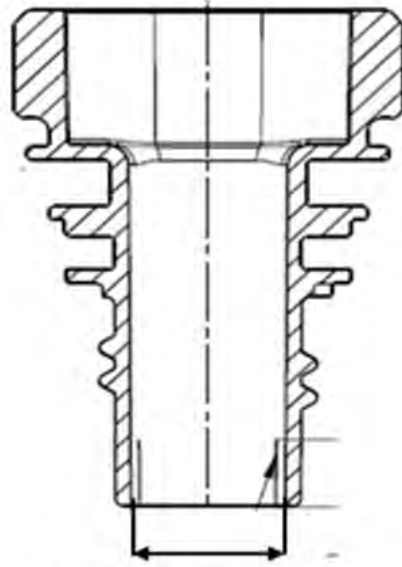
### Product Parameters

S no.	Test Name	Parameter	Standard
1	Cap Dimension Analysis	Cap Height	18.40±0.15mm
2	Spout Dimension Analysis	Spout Width	Ø12.00+0/-0.60mm
		Inner Diameter	Ø8.50+0.10/-0.15mm
		Outer Diameter	Ø15.65±0.10mm
3	Tamper Evident Test (For Cap )	Tamper ring should Break	-
4	Leakage Test	Inspection Pressure: 0.25bar Inspection Pressure Tolerance: 0.05bar Filling time: 3 sec Stabilization Time: 3 sec Test time: 3 sec	Pressure Decay upto 70pa allowed
5	Thread Position Deviation Test ( For Cap )	Cap to be tightened on Mandrel Guage till stops	±20°
6	Packing	-	Cap-12500pcs per Box Spout-8000pcs per Box

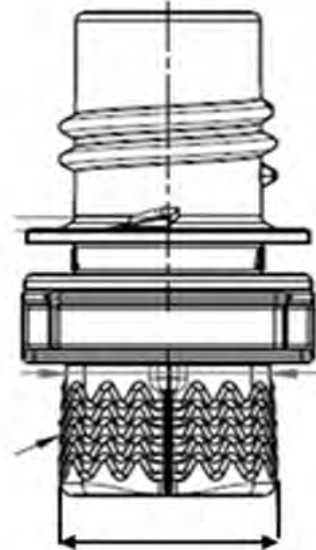
18.40±0.15mm



Cap 8.5mm



8.50mm+0.10/-0.15mm



12.00mm+0.0/-0.60mm

Spout 8.5mm